

JF系列描述

系统特点：

JF系列是展讯电声科技专门为高端娱乐市场量身打造的一款内置二分频专业扬声器系统。近几年来随着娱乐市场日新月异的发展，同时市场的竞争也日趋白热化。市场对音箱产品的要求也越来越高。因此我们的客人不断的向企业提出音箱产品改进和提升的要求。在这种情况下尼沃的研发团队从以下几点出发：1、产品的可靠性、耐用性；2、话筒声音的饱满度和通透度；3、音乐与话筒的融合度；4、现场飞咪的可控性；5、产品要求既可唱也可嗨；6、专业卡拉OK系统的配套性。结合实际的应用经验潜心研发了JF这一系列的产品。一款好的娱乐产品不管是专业歌手还是普通的大众，拿咪就想唱，唱完还想继续时，这款产品就算成功。在上文提到的第6点“专业卡拉OK系统的配套性”这里需要单独提出来讨论一下，有很多客商可能都有这样的感觉，总是找不到满意的话筒、前级效果器、功放、音箱。这个问题主要出在缺乏专业的配套性上。因为系统中的每一个环节都需在一个标准的测试环境（无响室）下进行校对和匹配。再到实际的卡拉OK房间进行验证，验证通过后产品才能推出市场。而不是随意的乱配。

系统应用及配置：

JF-10是由1只44芯高音，1只10寸65芯低音单元构成；该箱阻抗为8欧姆、额定功率为250W。JF-12是由1只44芯高音，1只12寸75芯低音单元构成；该箱阻抗为8欧姆、额定功率为400W。JF-15是由1只44芯高音，1只15寸75芯低音单元构成；该箱阻抗为8欧姆、额定功率为500W。JF-18& JF-218 是与JF-10&JF-12&JF-15配套使用的超重低音，JF-18是由1只18寸100芯高性能铁氧体低音单元构成；该箱阻抗为8欧姆、额定功率为600W。JF-218是由2只18寸100芯高性能铁氧体低音单元构成；该箱阻抗为4欧姆、额定功率为1200W。在应用中根据使用场所的实际需求，优选合适的音箱（JF-10&JF-12&JF-15）组合，达到所需的效果。另外，JF-10&JF-12&JF-15也可以与JF-18& JF-218超低音音箱配套使用，植入一台处理器构成外置两分频系统。在实际应用中为调音师提供了一个专业发挥的空间。在系统搭配上注意功放与音箱阻抗之间的匹

配；避免系统匹配出现错误，在系统使用过程中严禁信号失真或过载，否则将会对系统造成严重损毁。

箱体结构：

JF系列产品采用优质的18mm多层实木夹板，箱体表面处理采用环保（ROHS）的水性油漆，外表坚固耐用。箱体颜色以白色为主，也可以根据客户要求定做。（JF系列正常标配为白色，需要特殊颜色时须与业务人员特别说明。）

吊装方式：

JF系列全频音箱顶部和两侧面都有羊眼圈吊点；既可以垂直吊装，也可以水平吊装。

应用范围：

广泛的应用于高档酒吧、夜总会、会所等场所。



系统配置

扬声器型号及数量	JF12	4只
功率放大器	2x600W/8Ω	2台
音箱前级效果器	Hi-Fi2600	1台
手持无线话筒	Q50	1套
线材	2.5M ² x2芯专业音响工程电缆线	

技术说明：

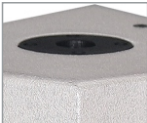
此套音响系统专用于高定位的夜总会，休闲会所，方案适合25-40平方米的房间使用。



JF-218



JF-18



JF-10



JF-12



JF-15

TECHNICAL INFORMATION

Model	JF-10	JF-12	JF-15	JF-18	JF-218
Power-Watts	250W(RMS)/625W(PGM)	400W(RMS)/1000W(PGM)	450W(RMS)/1125W(PGM)	600W (RMS)/1500W(PGM)	1200W (RMS)/3000W(PGM)
Sensitivity(dBSPL 1W/1M)	97dB(1W/1M)	98dB(1W/1M)	99dB(1W/1M)	99dB(1W/1M)	101dB(1W/1M)
Impedance (ohms)	8Ω	8Ω	8Ω	8Ω	4Ω
Frequency Response	50Hz-19KHz	45Hz-20KHz	45Hz-20KHz	35Hz-160Hz	30Hz-160Hz
Average Dispersion	100° × 50°	100° × 50°	100° × 50°	Quasi-omnidirectionals	Quasi-omnidirectionals
Loudspeaker and Loading					
LF	1×10"	1×12"	1×15"	1×18"	2×18"
	High pass vented box	High pass vented box	High pass vented box	High pass vented box	High pass vented box
HF	1×1"	1×1"	1×1"	/	/
	Exit horn loaded	Exit horn loaded	Exit horn loaded		
Weight(Kg)	15.2Kg	26Kg	39Kg	45Kg	87Kg
Dimensions (WxDxH)	325×330×515mm	370×370×605mm	435×450×720mm	542×780×561mm	1066×780×561mm
Packing (WxDxH)	405×410×595mm	450×450×685mm	520×535×810mm	642×880×661mm	1170×880×660mm

JF SERIES

JF Series Description

System Features:

JF series is a built-in passive filter two-way professional loudspeaker system. Newshow Electroacoustic designed specifically for high-end entertainment market. In recent years with the rapid development of the entertainment market, while also increasingly intense competition in the market. The market became more and more higher to the Speaker products requirement. Therefore our guests continually make the request to the enterprise for improve and enhance speakers. In this case, Newworl's research and development team starting from the following point: 1, product reliability and durability; 2, sound of the microphone is plump and transparent; 3, the degree of fusion between music and microphone; 4, the feedback and inhibition of microphone; 5, product requirements can also for singing and HiFi; 6, professional karaoke system supporting features. We painstakingly research and development the JF series of products combined with practical application experience. A good entertainment product, whether professional singer or ordinary people, once take the microphone want to sing, want to continue to sing after finish singing. So that is the success of this product. In point 6 above mentioned "professional karaoke system supporting features" proposed to discuss separately here, many merchants may have such of feeling, always can no find a satisfactory microphone, preamp effector, amplifier, and speakers. The problem mainly lies in the lack of professional support. Because each link in the system is in a standard test environment (anechoic chamber) under proofread and matching. Then authentication to the actual Karaoke room, after pass the test and verify, then the products can be put on the market finally. Rather than matching randomly.

System application and configuration:

JF-10 is composed of one HF driver with VC Φ 44mm, one 10" LF unit with VC Φ 65mm; The speaker impedance is 8 ohms, rated power is 250W. JF-12 is composed of one HF driver with VC Φ44mm, one 12" LF unit with VC Φ75mm; The speaker impedance is 8 ohms, rated power is 400W. JF-15 is composed of one HF driver with VC Φ44mm, one 15" LF unit with VC Φ75mm; The speaker impedance is 8 ohms, rated power is 500W. Super bass JF-18&JF-218 are supporting the use of JF-10&JF-12&JF-15. JF-18 is composed of one 18inch LF unit with VC Φ100mm and high-performance magnet; This speaker impedance is 8 ohms, rated power is 600W. JF-218 is composed of two 18inch woofers with VC Φ100mm and high-performance magnet; This speaker impedance is 4 ohms, rated power is 1200W. In the application, according to the actual demand of use place, selecting appropriate speakers (JF-10&JF-12&JF-15) combination to achieve the desired effect. In addition, JF-10&JF-12&JF-15 is supporting the use of super bass JF-18&JF-218, with one set processor constitute a built-in passive filter two-way system. In practice, provides professional space for tuner. So pay attention to the system matching between the amplifier and speaker impedance; avoid system matching error, during the process of using system forbid signal distortion and overload, otherwise it will cause serious damage to the system.

Enclosure structure:

JF series speaker of enclosure is built with high quality multi-layer in 18mm plywood. Using environmentally-friendly (ROHS) chemical materials and water-based paint for enclosure surface treatment, solid and durable surface. The main speaker color is white, can also be customized base on customer requirements. (JF Series normal standard for white color. you must confirm with sales person for special instructions when you needed.)

Installation method:

JF Series full-range speaker is with lifting points of claw ring on the top and both sides; both vertical lifting and horizontal lifting.

Applications:

Widely used in high class Bar, Nightclub, Chamber, etc.