

R.5 94&R2 474体育场馆扩声系统描述

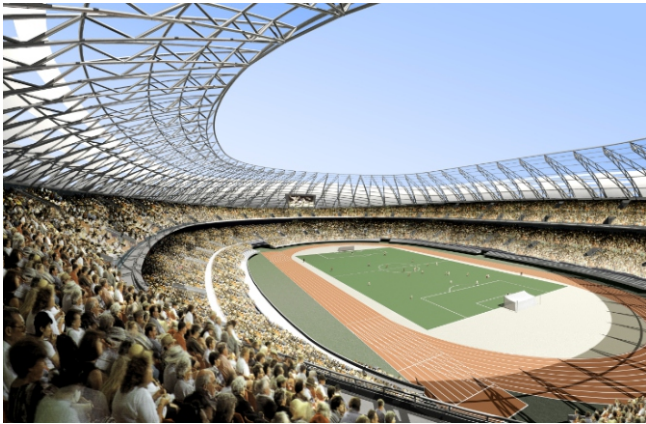
系统特点：

R.5 94&R2 474体育场馆扩声系统是广州市展讯电声科技有限公司针对体育场馆等户外固定安装场所而设计的全天候扬声器系统,**R.5 94**是由一只**44**芯的高音和一只**12寸65**芯 全纸的、高效率地低音单元构成;**R2 474**是由一只**44**芯的高音、一只**51**芯的驱动头中音、二只**65**芯全纸的、高效率的低音单元构成。该系列最主要的特点是**效率高、指向性强、全天候**。**R.5 94**主要是用于近场补声和小型场馆主扩，它的投射距离**15**米到**25**米的范围；**R2 474**主要用于大型场馆的主扩，该箱的投射距离最远可达**210**米。众所周知，户外扩声、大型室内场馆扩声都存在一个主要的问题，要么声反射比较严重、要么混响时间过长，建声条件普遍较差，对于这类型的场所也不可能做到一个很好的建声环境，所以我们只能从电声的角度出发来解决这类场所的扩声问题。要求我们要用强指向性、高效率的扬声器系统来完成。因为混响时间过长、反射点过多，在场内的观众需要直达声来满足他们的听觉需求，因此要求我们的音箱必须要满足强指向性和投射距离远的特点。大型的场馆往往从主控机房到音箱的传输距离较远，所以信号传输的损耗也较大，这时要求我们的音箱效率必须要高且功率不能太大。同时要求我们的音箱在恶劣的全天候自然环境下使用。所以，**R.5 94&R2 474**的箱体都是由玻璃纤维复合材料和三层不锈钢防雨网构成,有效地保护了内部的电声器件,提供了完全密封的全天候腔体。从应用的角度出发，**R**系列能够满足短、中、长距离的各种场所需求，提高了完美的语音和音乐扩声效果，是您的最佳选择。**R**系列对音乐及语音的高保真和全频再现，还解决了一

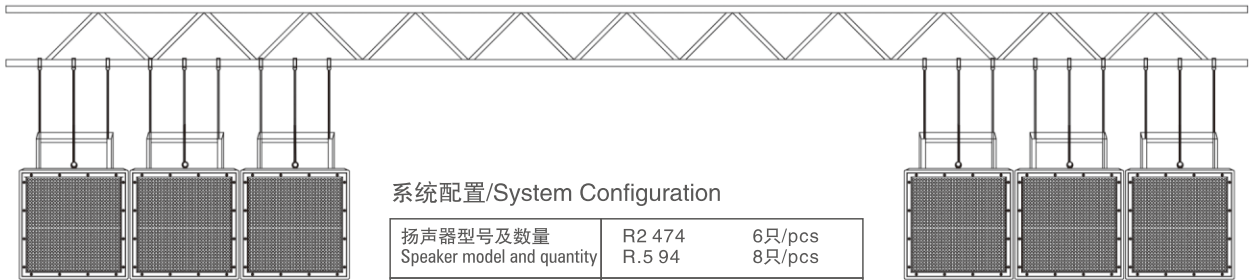
些其它产品无法应对的功能和成本问题。现已广泛应用于娱乐场所、主题公园、体育场馆、巨型油轮及赛马场。

应用范围：

R系列产品适用于体育场、体育馆、主题公园、游乐园、会议中心、展览中心、宴会厅、露天广场、竞技表演场、航空表演场、赛马场、游泳池、电声乐队、渡轮、音乐厅。



R系列体育场馆系统



系统配置/System Configuration

扬声器型号及数量 Speaker model and quantity	R2 474 R.5 94	6只/pcs 8只/pcs
功率放大器 Power amplifier	2 × 1800W/8 Ω 2 × 600W/8 Ω	3台/sets 4台/sets
线材 Speaker cable	2.5M ² x2芯专业音响工程电缆线 Speaker cable 2.5m ² ×2 core professional speaker engineering cable	

技术说明：

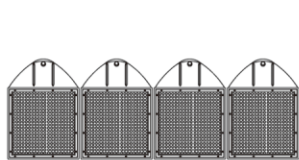
R.5 94投射距离15~25米

R2 474投射距离可达210米

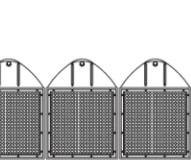
Note:

R.5 94 long-throw distance 15m~25m

R2 474 long-throw distance is 210 meters



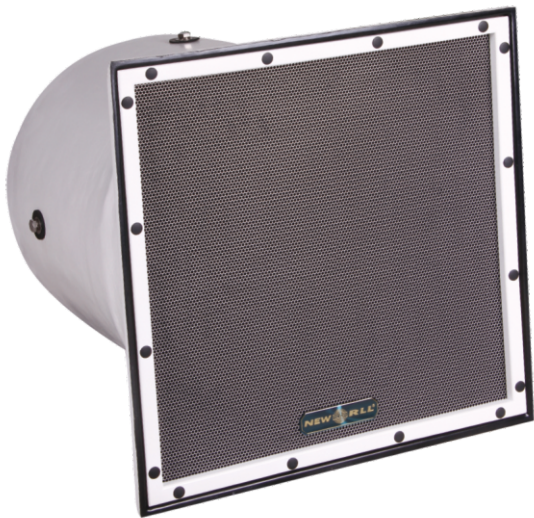
4 x R.5 94



4 x R.5 94



R.5 94



R2 474

R SERIES

R.5 94 & R2 474 STADIUM SOUND REINFORCEMENT SYSTEM DESCRIPTION

System features:

R.5 94 & R2 474 stadium sound reinforcement system that is Guangzhou **Newshow Electroacoustic Co., Ltd.** design for stadiums and other venues outdoor fixed installation all-weather loudspeaker system. **R.5 94** is composed of **one** HF driver with VC **Φ44mm**, **one 12-inch all-paper**, high efficiency LF unit with VC **Φ65mm**. **R2 474** is composed of **one** HF driver with VC **Φ44mm**, one driver head MF driver with VC **Φ51mm**, **two 12-inch all-paper**, high efficiency LF unit with VC **Φ65mm**. The main feature of the series is high efficiency, high directionality, and all-weather. **R.5 94** is mainly used to make **near-field expansion sound** and the **main sound reinforcement** for small-sized stadium, **long-throw distance** is ranging from 15 meters to 25 meters; **R2 474** is mainly used for large-scale **main sound reinforcement**, the farthest **long-throw distance** reach of **210 m**. As we all know, there is a main problem of outdoor sound reinforcement, large sized indoor stadium sound reinforcement, either more serious **acoustic reflexion** or **reverberation time** is too long, **architectural acoustics condition** are generally poor, it is impossible to achieve a very good architectural acoustics environment for this type of place, so we can only proceed to solve problems from the **electro-acoustic perspective** for such places. Require us to use **high directionality**, high efficiency loudspeaker system to complete. Because the **reverberation time** is too long, too much **reflection point**, the presence of the audience needs to **direct sound** to meet their hearing demand, thus requiring the speaker must meet **high directionality** and **long-throw distance** features. The **transmission distance** of large-sized stadium from the main control room to the speaker is far, so the loss of **signal transmission** is larger, and then the requirements of speakers must be high efficiency and not be too high power. Meanwhile the requirement of speaker can be used in the harsh all-weather natural environment. So, **R.5 94 & R2 474 cabinets are made of glass-fiber composites and three-layer stainless steel water-resistant mesh so that can effectively protect the internal electro-acoustic devices, and also provide all-weather completely sealed chamber**. From the point view of application, **R series** to meet the short, medium and long-range distance needs of a variety of places, improving the perfect voice and music sound reinforcement effects, this series is your best choice. R series no only high fidelity and full frequency reproduction for music and voice but also solves the problem of function and the cost of some other products are unable to cope with. Now widely used in Entertainment place, Theme Parks, Sports Stadiums, VLCC (very large crude carrier) and Racetrack.

Applications:

R series of products are suitable for the stadium, gymnasium, theme parks, amusement parks, conference center, exhibition center, banquet hall, the open square, sports arena, aviation arena, racetrack, swimming pool, electro-acoustic band, ferries, music Hall and other places.



TECHNICAL INFORMATION

Model	R.5 94	R2 474
Power-Watts	200W (RMS)/750W(PGM)	400W (RMS)/1000W(PGM)
Sensitivity(dBSPL 1W/1M)	100dB (1W/1M)	106dB (1W/1M)
Impedance (ohms)	8 Ω	8 Ω
Frequency Response	50Hz~18kHz	45Hz~18kHz
Average Dispersion	90° X 40°	90° X 40° 70° X 40°
Loudspeaker and Loading	LF:1 X 12 " High pass vented box MF:/ HF:1 X 1 " Exit horn loaded	LF:2 X 12 " High pass vented box MF:1 X 2 " Exit horn loaded HF:1 X 1 " Exit horn loaded
Weight(Kg)	16Kg	35.4Kg
Dimensions (WxDxH)	410×410×405mm	629x629x737mm
Packing (WxDxH)	500×500×510mm	670x670x840mm