

KF-930&BH-930系统描述:

系统特点:

KF-930是**KF900**系列家族中一款中小型的外置二分频线性阵列音箱。它跟其它**KF900**系列音箱一样也是Ω形的流线形外观设计。配以通体珍珠白的外表使**KF-930&BH-930**显得格外的娇小玲珑、晶莹剔透，以其甜美的音色、华丽的外表构成了一套巧夺天工之品。该箱是由2只44芯钹磁高音、2只8寸50芯钹磁中低音单元组成。**BH-930**是与**KF-930**配套使用的次低音音箱。它是由1只15寸100芯高性能铁氧体低音单元构成。**BH-930**与**KF-930**组合，构成外置三分频系统。该系统之所以加入**BH-930**次低音音箱，是因为**KF-930**音箱的8寸中低音单元低频下潜不够宽，所以需要**BH-930**来补充次低频部分。根据设计要求**BH-930**与**KF-930**之间是按1: 2的比例关系配套使用。即1只**BH-930**匹配2只**KF-930**。该系统是高档会所、教（厅）堂扩声、会议及中小型演出的最佳选择。

系统功放与负载阻抗的匹配关系:

该系统的功放与音箱阻抗之间的匹配关系是这样的：**1、KF-930**箱内单只高音单元的阻抗为**8欧姆**，两只高音单元在箱体内部是串联关系，这时负载阻抗变为了**16欧姆**。根据设计要求一台高音通道的功放可以驱动4只**KF-930**音箱的高音单元，这时功放的负载阻抗为**8欧姆**。**2、KF-930**箱内单只中低音单元的阻抗为**8欧姆**，在箱体内部是串联关系，这时负载阻抗为**16欧姆**。根据设计要求一台中低音通道的功放可以驱动4只**KF-930**音箱的中低音单元，这时功放的负载阻抗为**8欧姆**。**3、BH-930**音箱的阻抗为**8欧姆**，根据设计要求一台次低音通道的功放可以驱动2只**BH-930**音箱。这时功放的负载阻抗为**8欧姆**。**4、以2只BH-930和4只KF-930**音箱为例所需功放为：**4只KF930**音箱高音通道需1台相匹配的功放，中低音通道也是1台相匹配的功放，**BH-930**音箱需要1台相匹配的功放。共计**3**台功放。以此类推在系统搭配上注意功放与音箱阻抗之间的匹配；避免系统匹配出现错误，在系统使用过程中严禁**信号失真**或**过载**，否则将会对系统造成严重损毁。

箱体结构:

箱体板材是采用优质的多层的实木夹板。箱体的上下表面共有4个可拆卸的密封盖板，其作用是便于维护。箱体的表面处理材料采用环保（ROHS）的化工材料，全天候水性油漆。可在恶劣的自然环境下使用。

吊装方式:

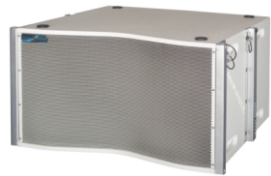
KF-930&BH-930有两种安装方式：吊装件都是采用优质的**T6061**铝型材。一种是用葫芦将**KF-930&BH930**吊装在**TRASS**或雷亚架上；另一种是，**KF-930**安装在**BH-930**上面放在舞台上。不锈钢插销连接，简单方便。

应用范围:

高档会所、剧院、教（厅）堂扩声、中小型演出等。



BH-930



KF-930-T



KF-930

KF-930 & BH-930 SYSTEM DESCRIPTION:

System Features:

KF-930 is a medium and small sized active control unit Bi-amp two-way line array speaker in **KF-900** series family. Its Ω-shaped streamlined design is same as **KF900** series. **KF-930 & BH-930** is with pearl white exterior that makes very particularly petite, crystal clear. Sweet timbre with its gorgeous appearance, it constitutes a wonderful workmanship of the product. It is composed of **two** Neo HF drivers with VC Φ**44mm**, **two 8 inch** Neo LF units with VC Φ**50mm**. **BH-930** under-bass is supporting the use of **KF-930**. **BH-930** is composed of **one 15 inch** woofer with VC Φ**100mm** and high-performance magnet. For **BH-930** and **KF-930** combination, it constitutes active control unit Bi-amp three-way line array system. The system is added **BH-930** under-bass speaker, because of **KF-930** speaker low frequency of **8 inch** low unit is not much wider, so need to use **BH-930** to extend the MID and Low frequency part. According to the design requirements, it is supporting the use between **BH-930** and **KF930** by the ratio of **1:2**. That is **1pc BH-930** match with **2pcs KF-930**. The system is the best choice for the high-end chamber, church, conferences, and small and medium sized concerts touring.

Matching relations between power amplifier system and load impedance:

The system matching relationship between the amplifier and speaker impedance is such that: ①, One pieces HF driver impedance is **8ohms** inside **KF-930** cabinet, two HF drivers is tandem relationship inside the cabinet, then load impedance into **16 ohms**. According to the design requirements of one set two channel HF amplifier can power HF drivers of **four pieces KF-930** speakers, then amplifier load impedance into **8 ohms**. ②, One pieces LF unit impedance is **8 ohms** inside **KF-930** cabinet, it is tandem relationship inside the cabinet, this time load impedance into **16 ohms**. According to the design requirements of one set two channel LF amplifier can power LF units of **four pieces KF-930** speakers, then amplifier load impedance into **8 ohms**. ③, **BH-930** speakers as impedance **8 ohms** setting, according to the design requirements of one set two channel LF amplifier can

power **two pieces BH-930** speakers, this time amplifier load impedance into **8ohms**. ④, For example, according to **two pieces BH-930** and **four pieces KF-930** speakers, total amplifier is required: **one** set HF amplifier and **one** set LF amplifier for match **KF-930**, **one** set LF amplifier for match **BH-930**. Total is **three sets** amplifiers. So pay attention to the system matching between the amplifier and speaker impedance; avoid system matching error, during the process of using system forbid **signal distortion** and **overload**, otherwise it will cause serious damage to the system.

Enclosure structure:

Enclosure is made of high quality multi-layer plywood. The upper and lower surfaces of the enclosure there are **four** removable glands, it is convenient to maintenance. Using environmentally-friendly (**ROHS**) chemical materials for the cabinet surface treatment, all-weather water-based paint; It can be used in the rugged natural environment.

Installation method:

There have two installation methods for **KF-930 & BH-930**: the flying accessories are made of high quality aluminum T6061 profiles. One is to use hoist lifting the **KF-930&BH-930** in **TRASS** or layer rack; the other is **KF-930** can be installed above **BH-930** on the stage. Stainless steel bolt connection, very simple and convenient.

Applications:

This system is suitable for high-end Chamber, Theater, Church, small and medium sized concerts Touring, etc.



TECHNICAL INFORMATION

Model

Power-Watts

KF-930

500W(RMS)/1250W(PGM)

LF:250W×2/ HF:50W×2

BH-930

600W(RMS)/1500W(PGM)

Sensitivity(dBSPL 1W/1M)

105dB

Impedance(ohms)

16 Ω

Frequency Response

LF:120Hz~2.5kHz/ HF:2.5kHz~19kHz

Average Dispersion

150° x 10°

Loudspeaker and Loading

LF:2x8" High pass vented box

HF:2x1" Exit horn loaded

Weight(Kg)

21.5Kg

Dimensions(W×D×H)

775×251×355mm

Packing(W×D×H)

825×570×585mm(pair/ctn)

99dB(1W/1M)

8 Ω

60Hz~150Hz

Quasi-omnidirectionals

1x15" High pass vented box

40Kg

775×615×420mm

825×665×650mm

KF 系列专业线性阵列系统

KF-930

系统配置

扬声器系统结构:	外置3路分频系统
扬声器型号及数量:	KF-930 8只 BH-930 4只
可调角度:	4只KF-930音箱0° ~40° 可调
功率放大器:	HF:2 X600W/8 Ω 2台 LF:2X1100W/8 Ω 2台 SUB:2X1500W/8 Ω 2台
音箱处理器:	DP446 1台
线材:	2.5M² × 8芯专业音箱工程电缆线
附件:	10U功放机柜 3个 KF-930航空箱 4只 BH-930航空箱 4只

技术说明:
此方案适合小型演出活动，建议使用距离为80米，使用人数约为6000人。

System Configuration

Loudspeaker system structure:	active control unit Bi-amp 3-way system
Speaker model and quantity:	KF-930 8pcs BH-930 4pcs
Adjustable angle:	adjustable angle 0° ~ 40° between 4 pieces speaker KF-930
Power amplifier	HF: 2 X600W/8 Ω 2sets LF: 2X1100W/8 Ω 2sets SUB: 2X1500W/8 Ω 2sets
Processor:	DP 446 1set
Speaker cable:	2.5m²x8 core professional speaker engineering cable
Accessories:	10U amplifier rack 3pcs KF-930 flight case 4pcs BH-930 flight case 4pcs

Technical note:
This scheme is suitable for small-sized concerts touring, recommendations apply to 80 meters away, using about 6000 audiences.

KF-930x4
BH-930x2

KF-930x4
BH-930x2

