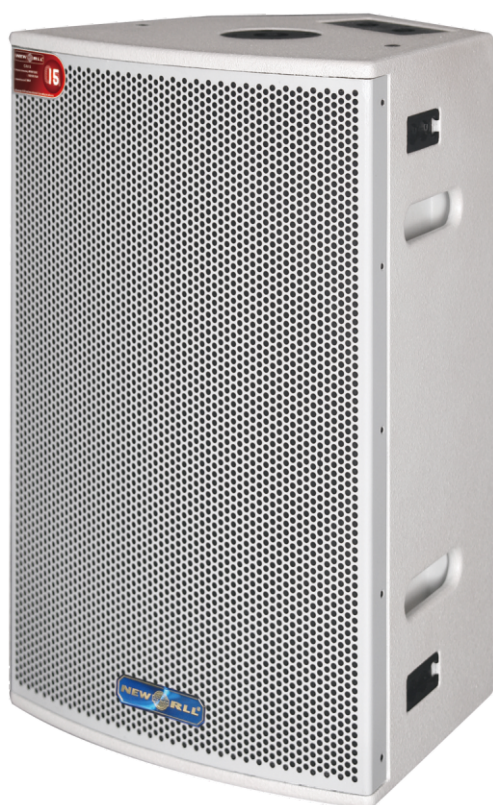


CA SERIES



FEATURES

CA SERIES CA-10/CA-12/CA-15

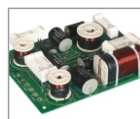
PHYSICAL PROPERTIES

● **Product Type:** The CA Series consists of the CA-10, CA-12, CA-15. The CA-10, CA-12 and CA-15 are Wide-range compact coaxial loudspeakers system, two-way/two-speaker, high power, short throw with built-in passive filter.

● **Enclosure Material and Finish:** Rectangular enclosure in 18mm plywood with internal bracing, and steel or integral handles. Black ultra thane paint.

● **Standar Accessories:** The CA-10 and CA-12 and CA-15 are equipped with highly resistant vibration-free protective perforated steel grill covered in black foam; 2 handles, Speakon NL4FC connector.

● **Connectors:** 2 X NL4 speakon in parallel
LF and HF Pin 1+, 2+pos; Pin 1-, 2- neg (CA-10/CA-12/CA-15)



DESCRIPTION

- Live sound reinforcement
- Touring and installed applications
- Special effects sub-bass



CA-10



CA-12



CA-15

TECHNICAL INFORMATION

Model	CA-10	CA-12	CA-15
Power-Watts	300W (RMS)/625W(PGM)	400W (RMS)/1000W(PGM)	450W (RMS)/1250W(PGM)
Sensitivity(dBSPL 1W/1M)	97dB (1W/1M)	98dB (1W/1M)	99dB (1W/1M)
Impedance (ohms)	8Ω	8Ω	8Ω
Frequency Response	50Hz~19kHz	45Hz~20kHz	45Hz~20kHz
Average Dispersion	1 X 10 "	1 X 12 "	1 X 15 "
Loudspeaker and Loading	weatherpro of loudspeaker	weatherpro of loudspeaker	weatherproof loudspeaker
LF	1 X 1.38 "	1 X 1.75 "	1 X 1.75 "
HF	HF drive coaxially mounted	HF drive coaxially mounted	HF drive coaxially mounted
Weight(Kg)	18.4Kg	21.5Kg	27Kg
Dimensions (WxDxH)	346×297×526mm	390×342×596mm	450×397×680mm
Packing (WxDxH)	415×360×595mm	460×412×670mm	545×480×760mm